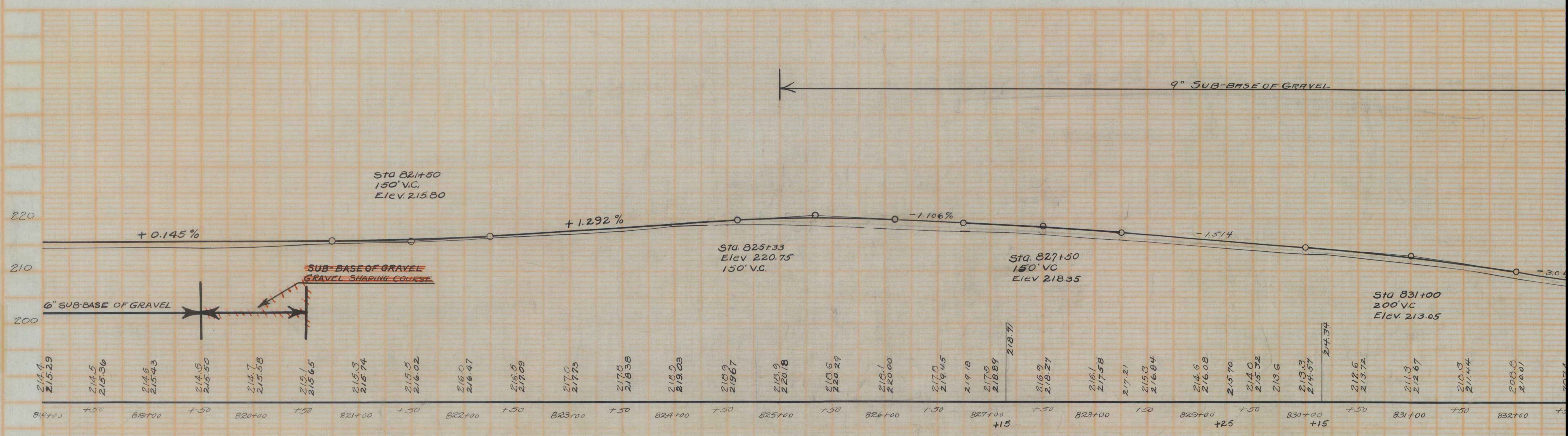
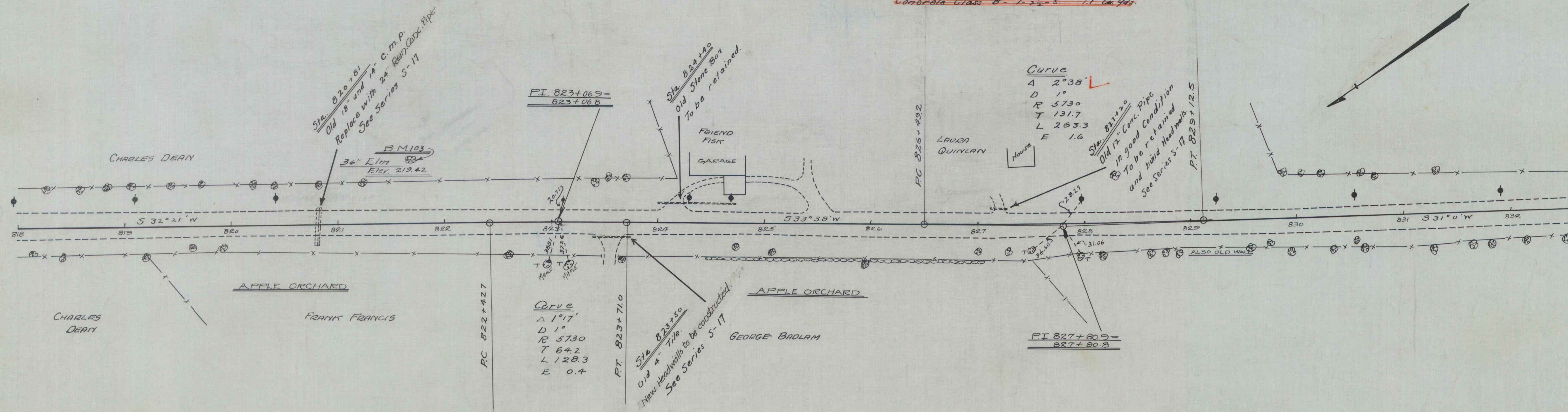


WOOD GUARD RAIL REQUIRED
 LEFT
 Sta. 820+69 to 820+93 Length 24 ft. ✓
 RIGHT
 Sta. 820+69 to 820+93 Length 24 ft. ✓

NEW CULVERTS REQUIRED
 Sta. 820+81 - 24" Reinf. Concrete Pipe Culvert 32 ft. ✓
 Concrete Class A (1-2-4) 4.726 Cu. Yds.
 Reinforcing Steel 5+ 60 pounds.

DRIVEWAY CULVERT REPAIRS REQUIRED
 Sta. 827+20 Build New Headwall using 14" Pipe
 Concrete Class B (1-2-3) 1.426 Cu. Yds.

SUB-BASE OF GRAVEL REQUIRED
 Sta. 819+00 to 819+50 - 6" Sub-base of gravel 150 Lin. Ft.
~~819+50 to 820+50 Gravel Shaking Course 100~~
 " 825+00 to 834+00 4" Sub-base of gravel 900 Lin. Ft.



B.M. No. 103 Spike in 36" Elm. Left of Sta. 821+69 Elev. 219.42
 B.M. No. 104 " " 18" " Right " " 823+40 Elev. 203.99